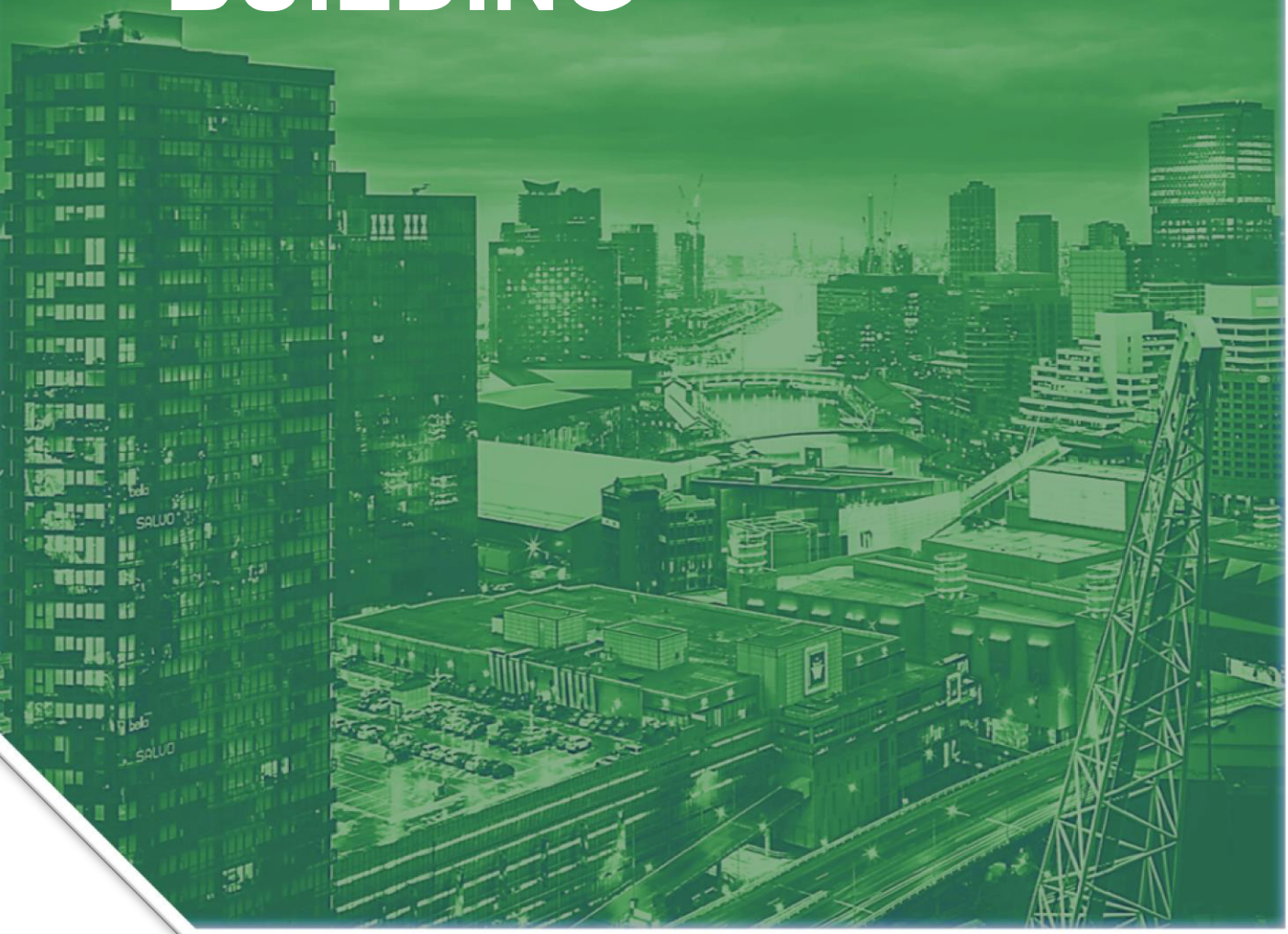


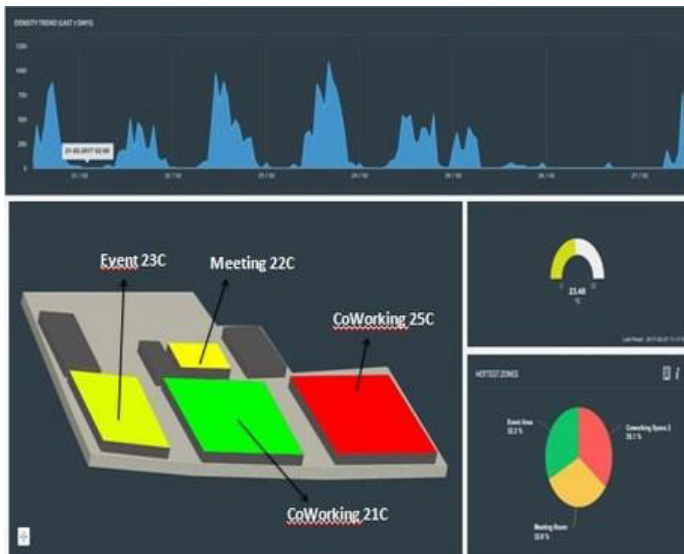
DIGITALIZING YOUR BUILDING



“BEAD - THE SMART
ART OF ENERGY
SAVING”

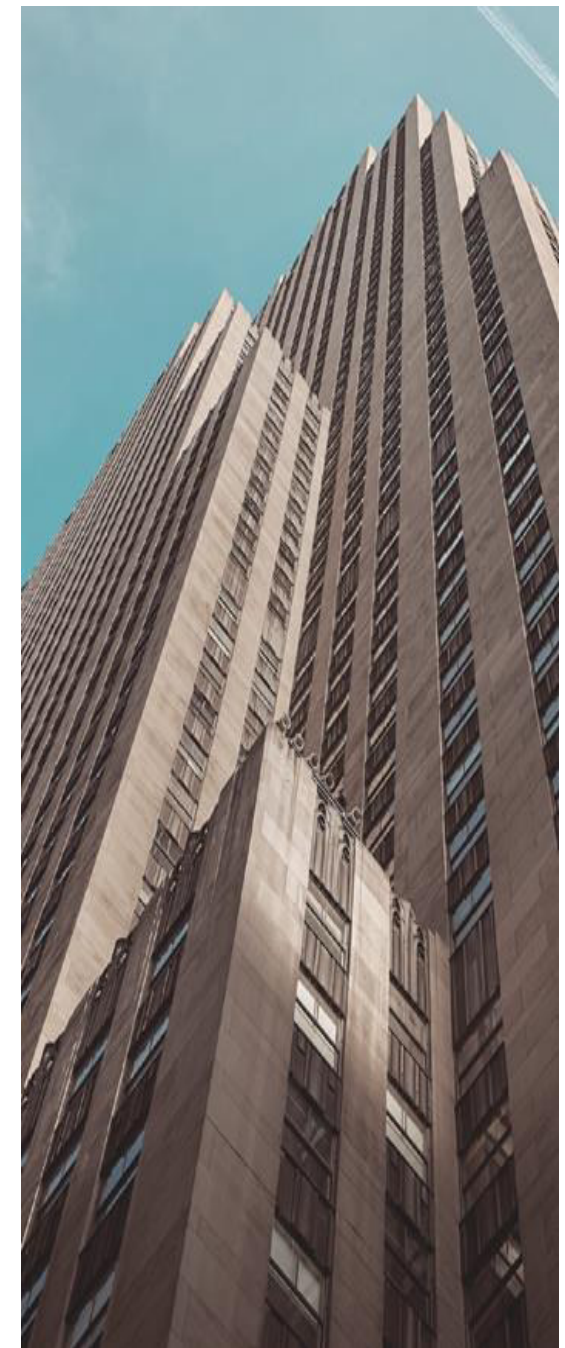


BEAD



“Take advantage of our knowhow and reduce your energy consumption up to 40%!”

- **BEAD, the virtual Energy Agent** -



BEAD – Identifying the real consumption of buildings

Automation technologies work on fixed schedules and are based on standard assumptions of occupancy of commercial buildings and in the residential sector. But in real life, only 1/3 of these assumptions occur.

For example, most of the time we light or ventilate empty buildings, store-rooms or flats.

The reason therefore is that traditional automation systems are disconnected from the behaviour of humans and the environment in which they operate.

Our Mission

Together with our exclusive partner BEAD Technologies, we are focused on making it easy to create smart and intelligent buildings that can adopt themselves into real life of humans.

With the extensive knowledge on AI and Machine Learning, Bead’s technology will convert your building into a living ecosystem that not only saves you money, but also has a positive impact on climate.

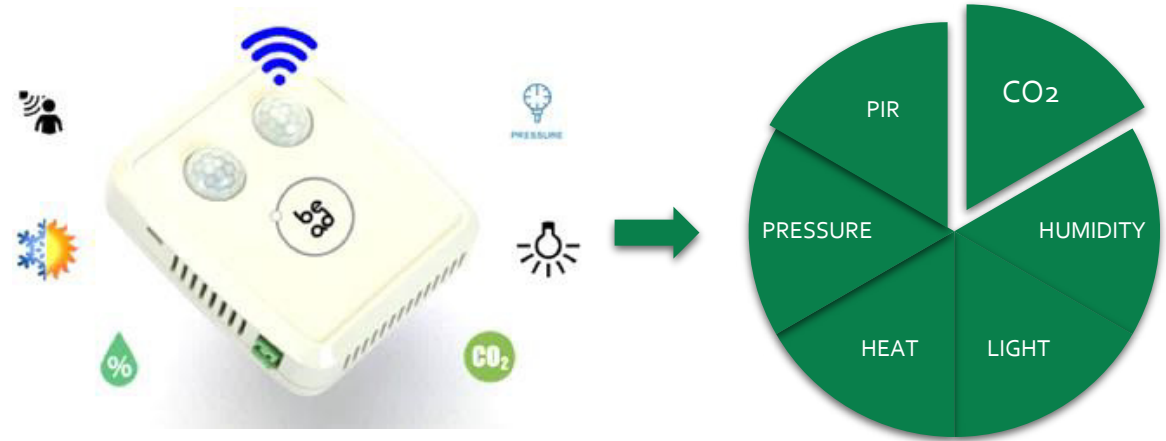
www.carbon-connect.ch

Our Technology

BEAD is an IOT device that analyses the real-time daily cycle of occupancy and tracks changes and circumstances of your building from multiple points.

Our analytics software and AI based system of sensing, learning and control will increase the intelligence of your building's automation system. Using Bead is a simple and cost-effective way to optimize the operations of your building.

We will analyze your real energy consumption and help you to fulfill easily your energy goals across all of your properties.

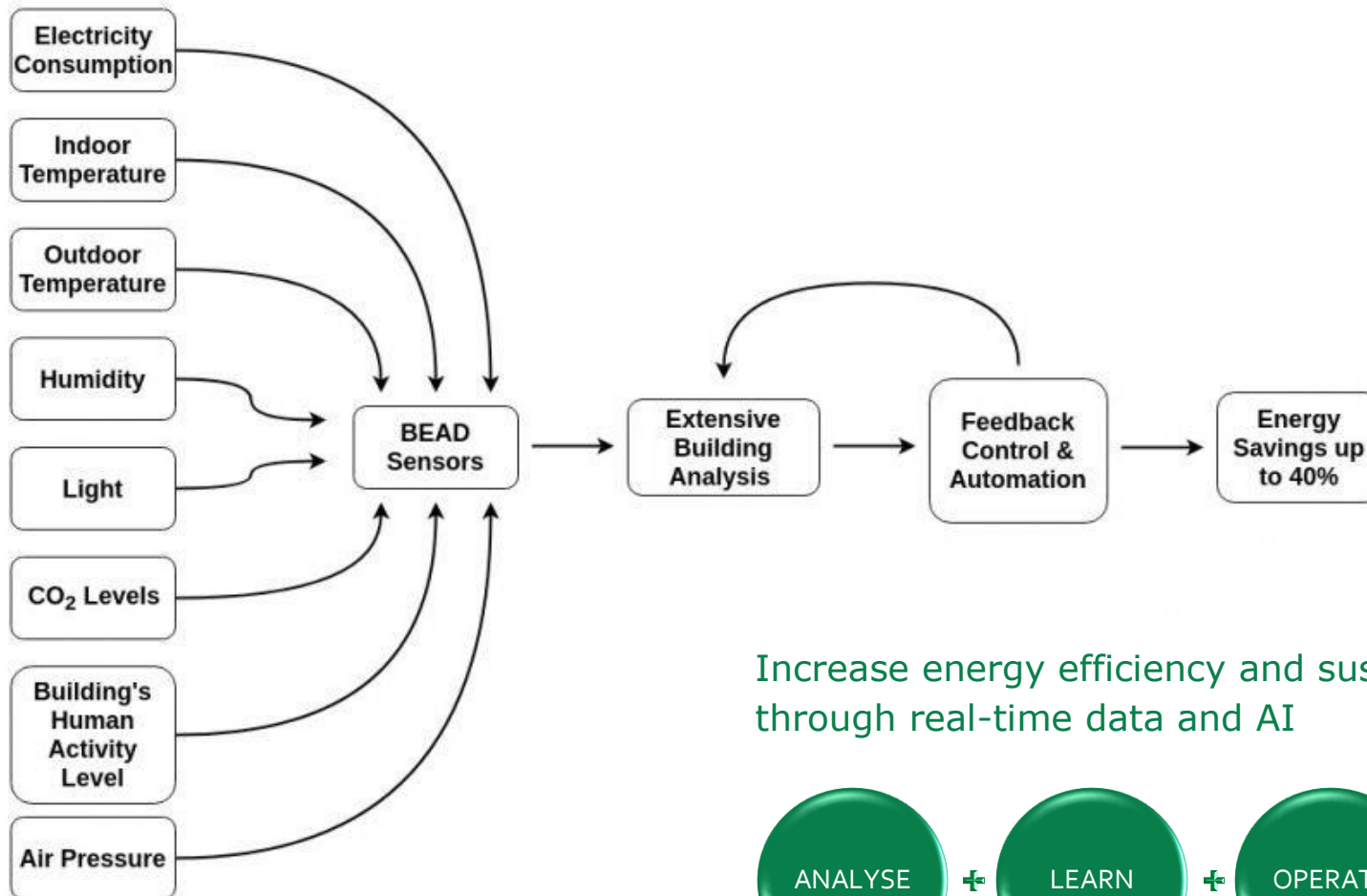


Multiple sensors housed in one small IOT device with a cloud-based analytics platform

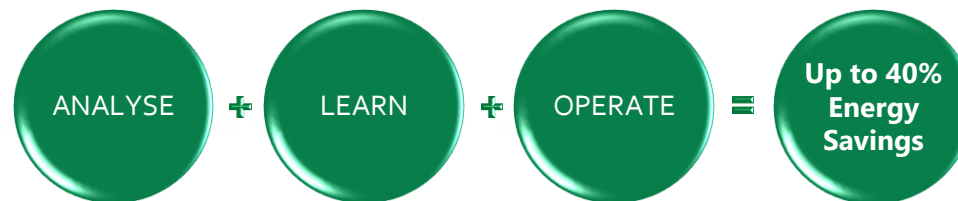


www.carbon-connect.ch

BEAD – How it works!

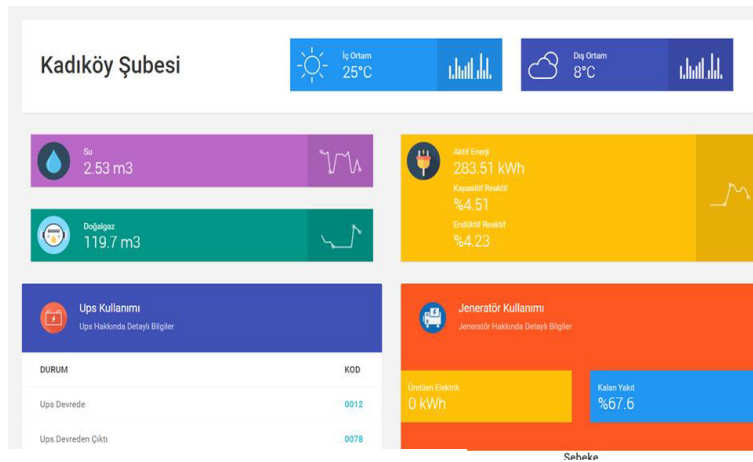


Increase energy efficiency and sustainability through real-time data and AI



BEAD – Dashboard

One dashboard that shows you all the details of your buildings, locations and production sites. Track the real-time status, monitor the energy efficiency of your plants and receive data-driven notifications from anywhere, anytime.



- Energy consumption
- Indoor temperature changes
- Indoor air quality
- Energy profiles
- Financial expenses
- Inventory list
- Occupancy trends
- Trending zones and density flow
- Heat map

BEAD – Multiple Applications



BEAD gives you the opportunity to track the day-cycle of your buildings in real-time.

Get your smart solution for better energy savings and less carbon emissions.

Start now and connect yourself with your building!

www.carbon-connect.ch